

HOVIS Lite

Assembly Manual for Application Models

4DOF Walking Robot



Dongbu Robot

Assembly Manual for Application Models of HOVIS Lite

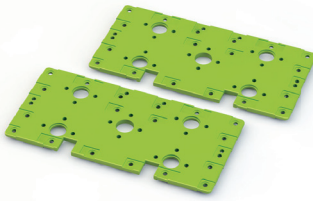
Part List for 4DOF Walking Robot

HOVIS Lite

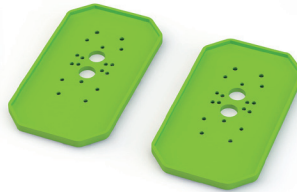


ID
0
~
ID
3

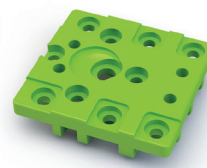
x4 DRS-0101
HerkuleX Servo



x2 DRB-0001
Front / Back



x2 DRB-0003
Foot



x2 DRB-0004
Universal Plate



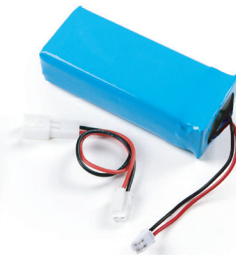
x2 DRB-0011
U4-type Bracket



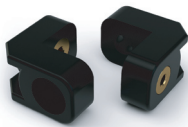
x1 DRB-0007
Battery Case & Holder



x1 DRC-005T
Controller



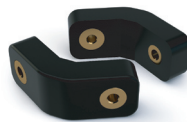
x1 DRL-0728
7.4V Li-Po Battery
(3,000mA)



x16 DRJ-0001
L-type Joint
(Single Nut)



x20 DRJ-0007
I-type Joint
(16.0mm, Hole only)



x2 DRJ-0009
V-type Joint
(12.0mm, Double Nut)



x2 DRJ-0011
Bushing Set

1:1 SCALE



x8 DRA-0051
Nut (M2)



x20 DRA-0056
Bolt (PH/M 2.0x4)



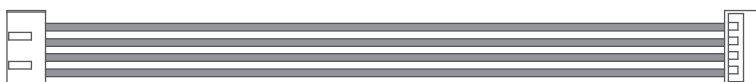
x32 DRA-0058
Bolt (PH/M 2.0x6)



x2 DRA-0062
Bolt (PH/M 3.0x8)



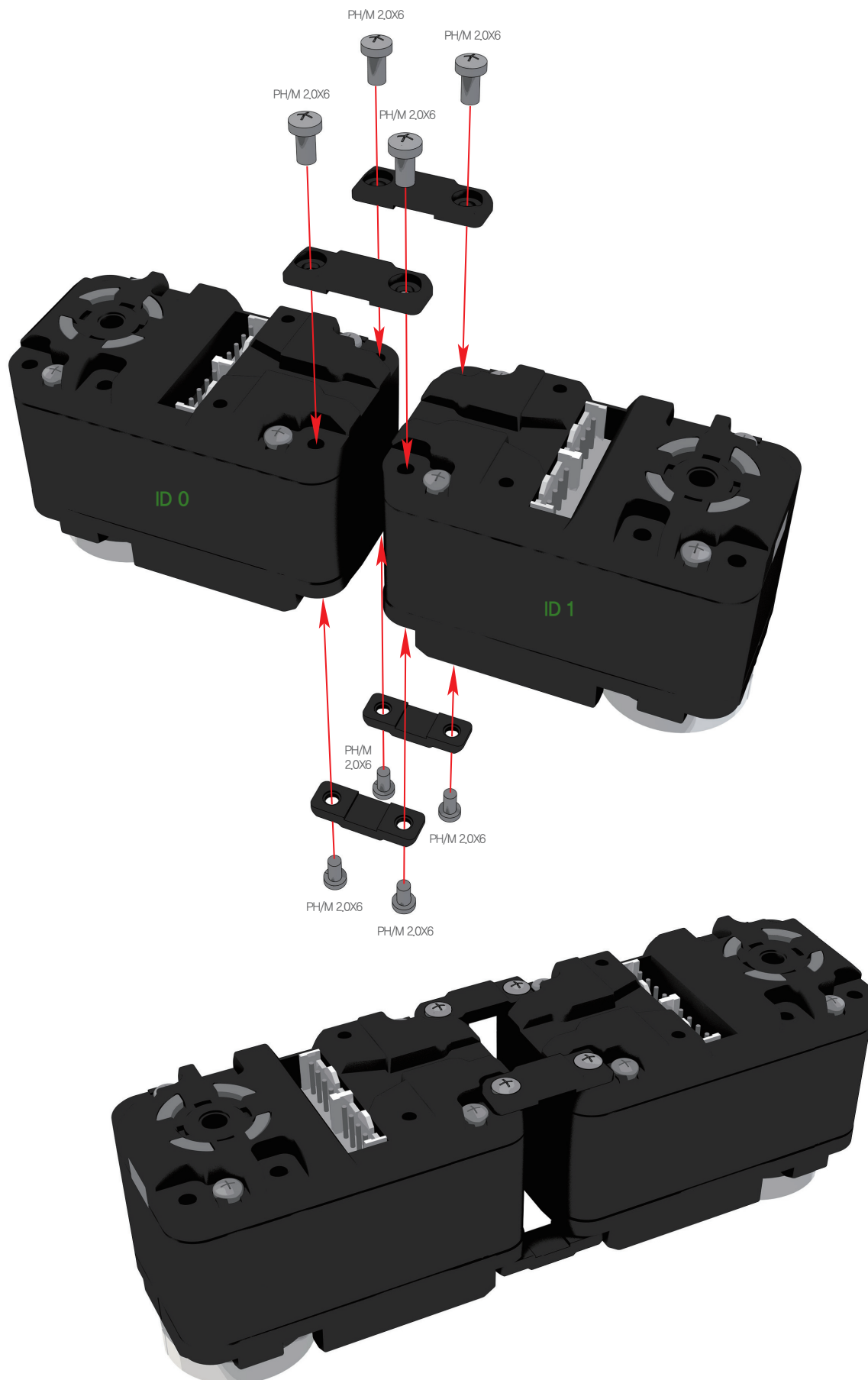
x14 DRA-0064
Bolt (PH/T 2.0x5)



x4 DRA-0003
Harness (100mm)

Assembly Manual for Application Models of HOVIS Lite 4DOF Walking Robot

HOVIS Lite



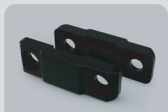
Required Parts



DRS-0101
HerkuleX Servo **2ea**

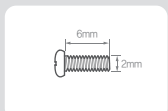


DRA-0058
Bolt (PH/M 2.0x6) **8ea**



DRJ-0007
I-type Joint
(16.0mm, Hole only) **4ea**

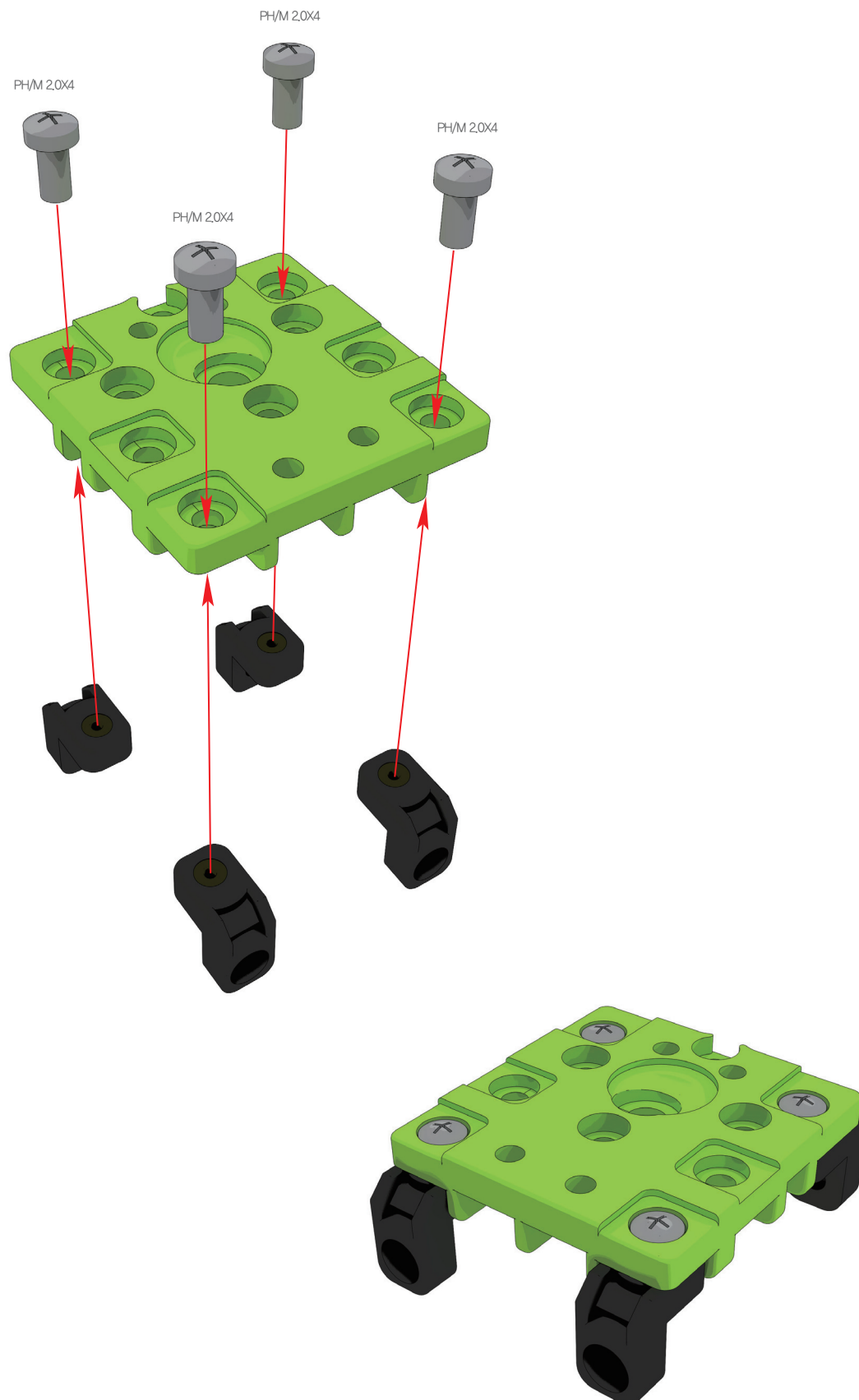
1:1 SCALE



PH/M 2.0x6

Assembly Manual for Application Models of HOVIS Lite 4DOF Walking Robot

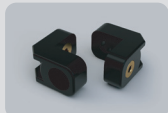
HOVIS Lite



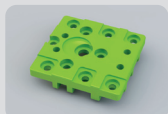
Required Parts



DRA-0056
Bolt (PH/M 2.0x4) **8ea**

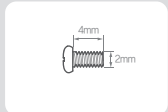


DRJ-0001
L-type Joint
(Single Nut) **8ea**



DRB-0004
Universal Plate **2ea**

1:1 SCALE



PH/M 2.0x4

※ Assemble **another set** in the same manner.

Assembly Manual for Application Models of HOVIS Lite 4DOF Walking Robot

HOVIS Lite

Required Parts

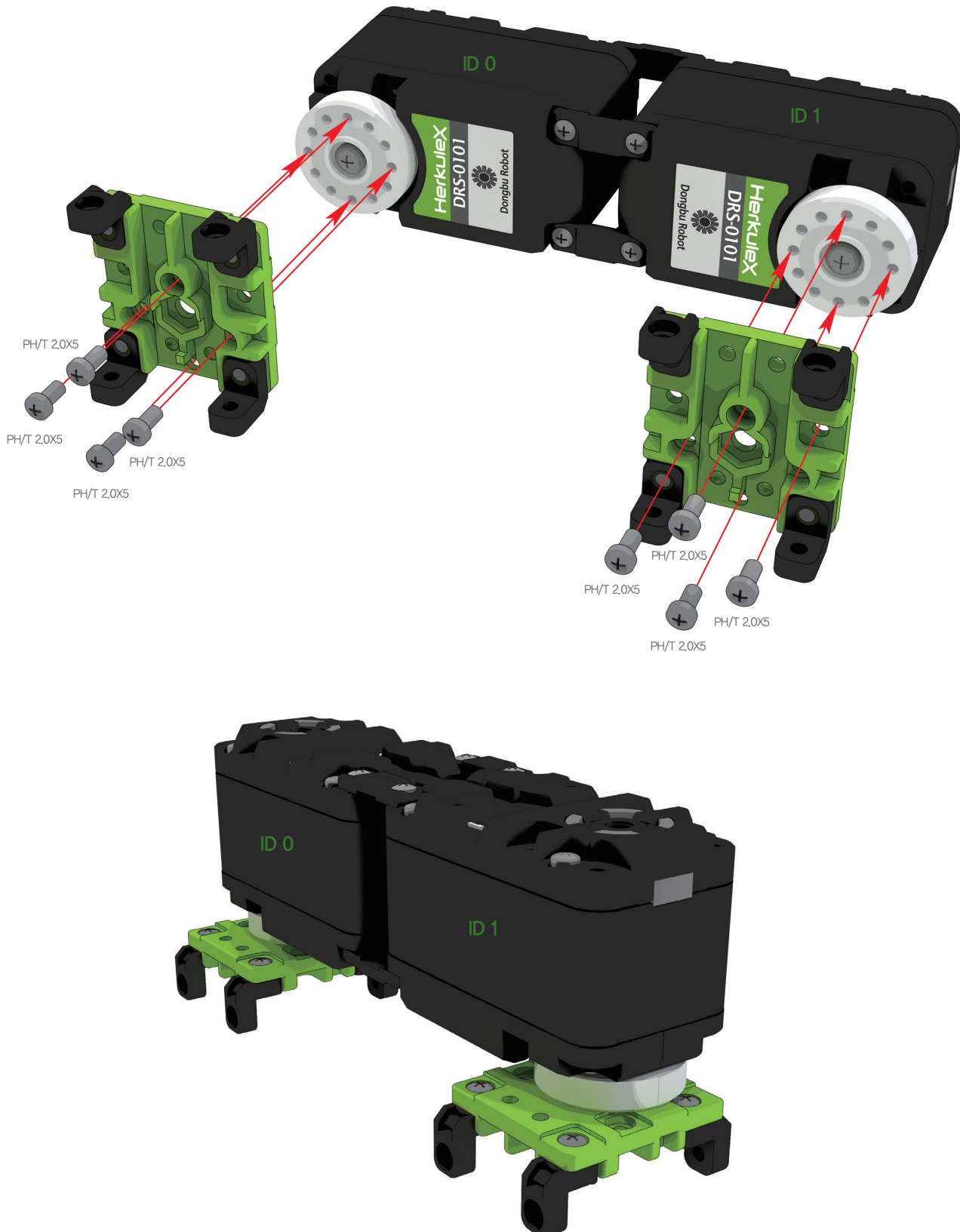


DRA-0064
Bolt (PH/T 2.0X5)

1:1 SCALE

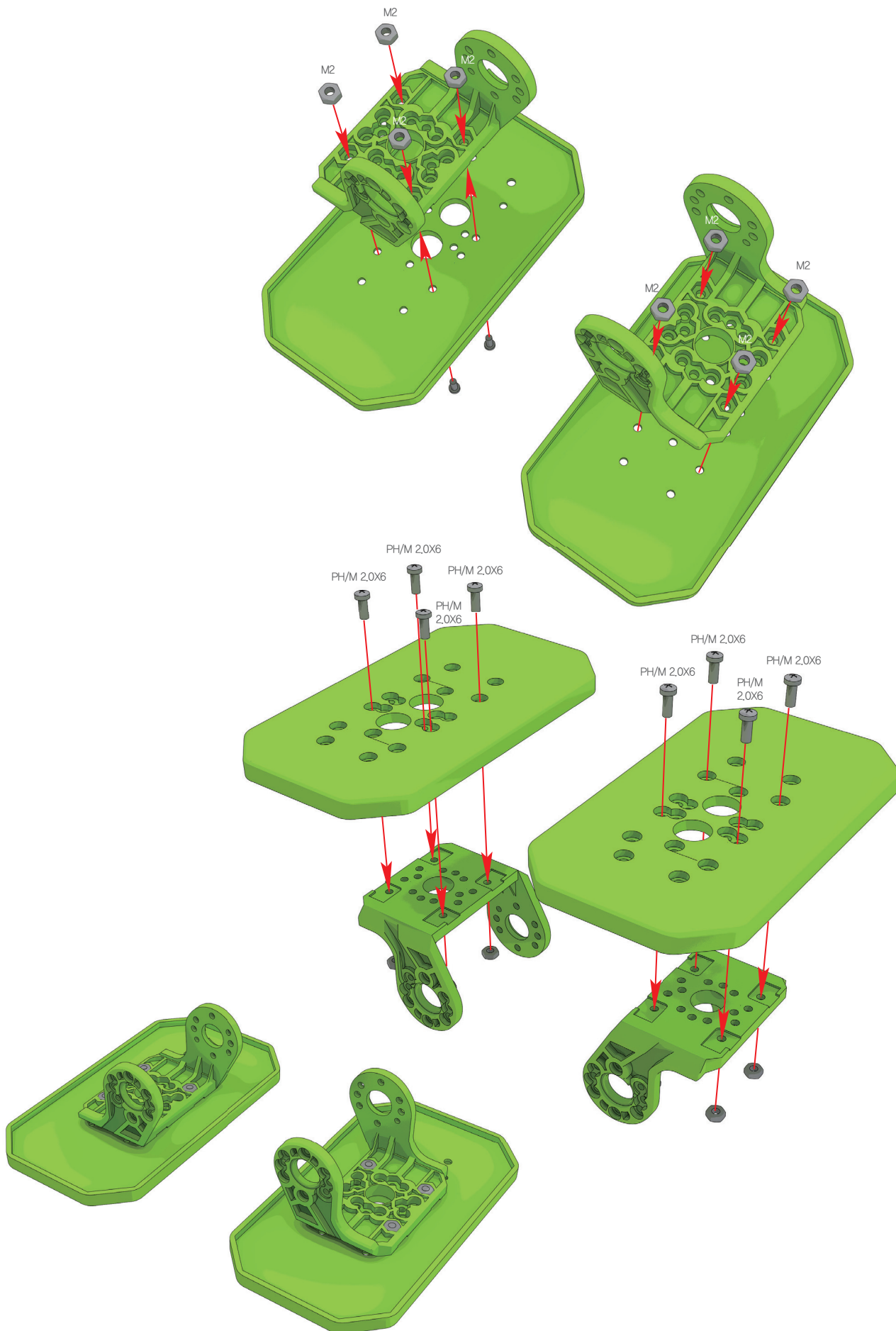


PH/T 2.0X5



Assembly Manual for Application Models of HOVIS Lite 4DOF Walking Robot

HOVIS Lite



Required Parts



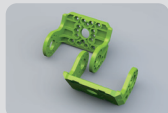
DRA-0051 8ea
Nut (M2)



DRA-0058 8ea
Bolt (PH/M 2.0X6)



DRB-0003 2ea
Foot

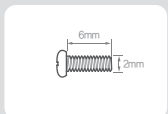


DRB-0011 2ea
U4-type Bracket

1:1 SCALE



M2



PH/M 2.0X6

Assembly Manual for Application Models of HOVIS Lite 4DOF Walking Robot

HOVIS Lite

Required Parts



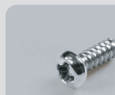
DRS-0101
HerkuleX Servo **2ea**



DRA-0058
Bolt (PH/M 2.0X6) **8ea**



DRA-0062
Bolt (PH/M 3.0X8) **2ea**



DRA-0064
Bolt (PH/T 2.0X5) **6ea**



DRJ-0011
Bushing Set **2ea**

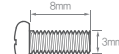
1:1 SCALE



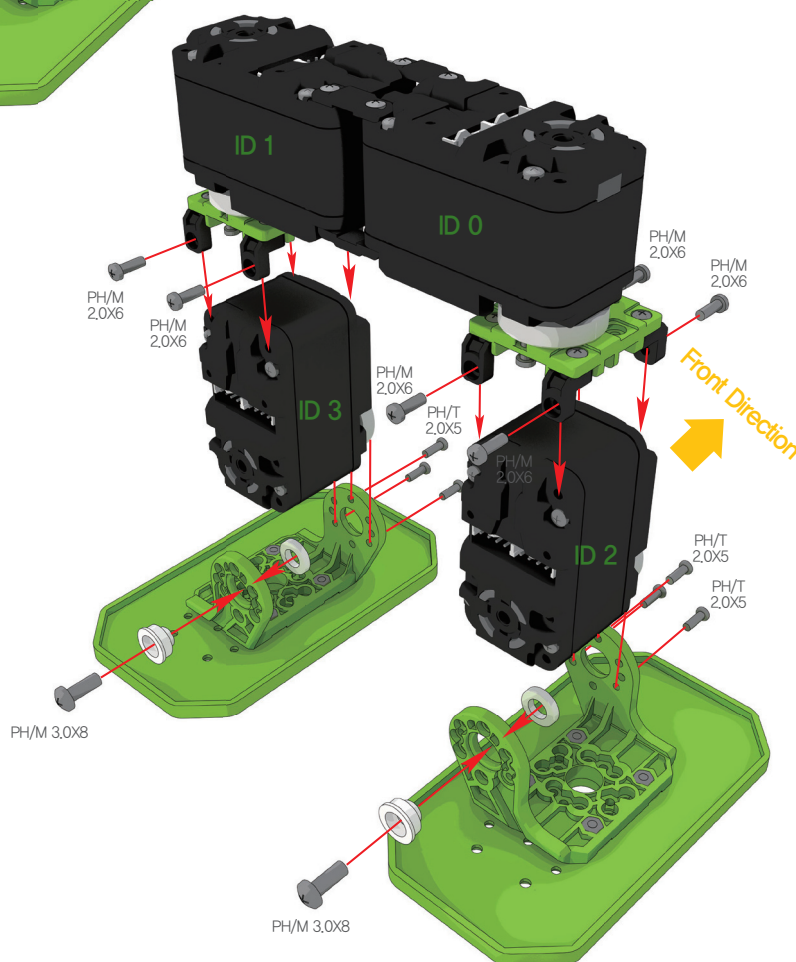
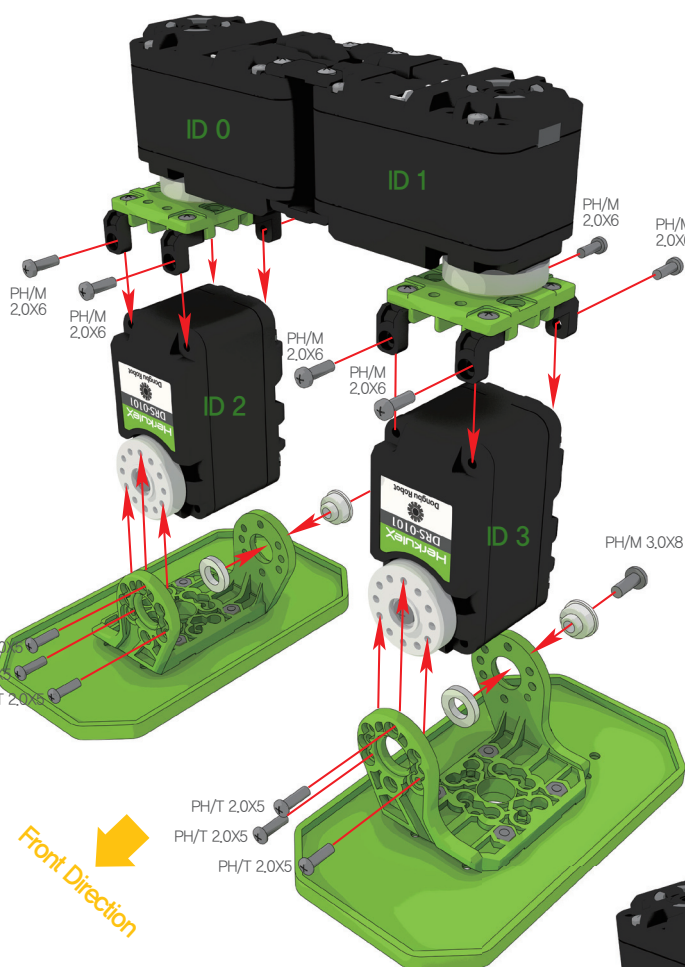
PH/T 2.0X5



PH/M 2.0X6



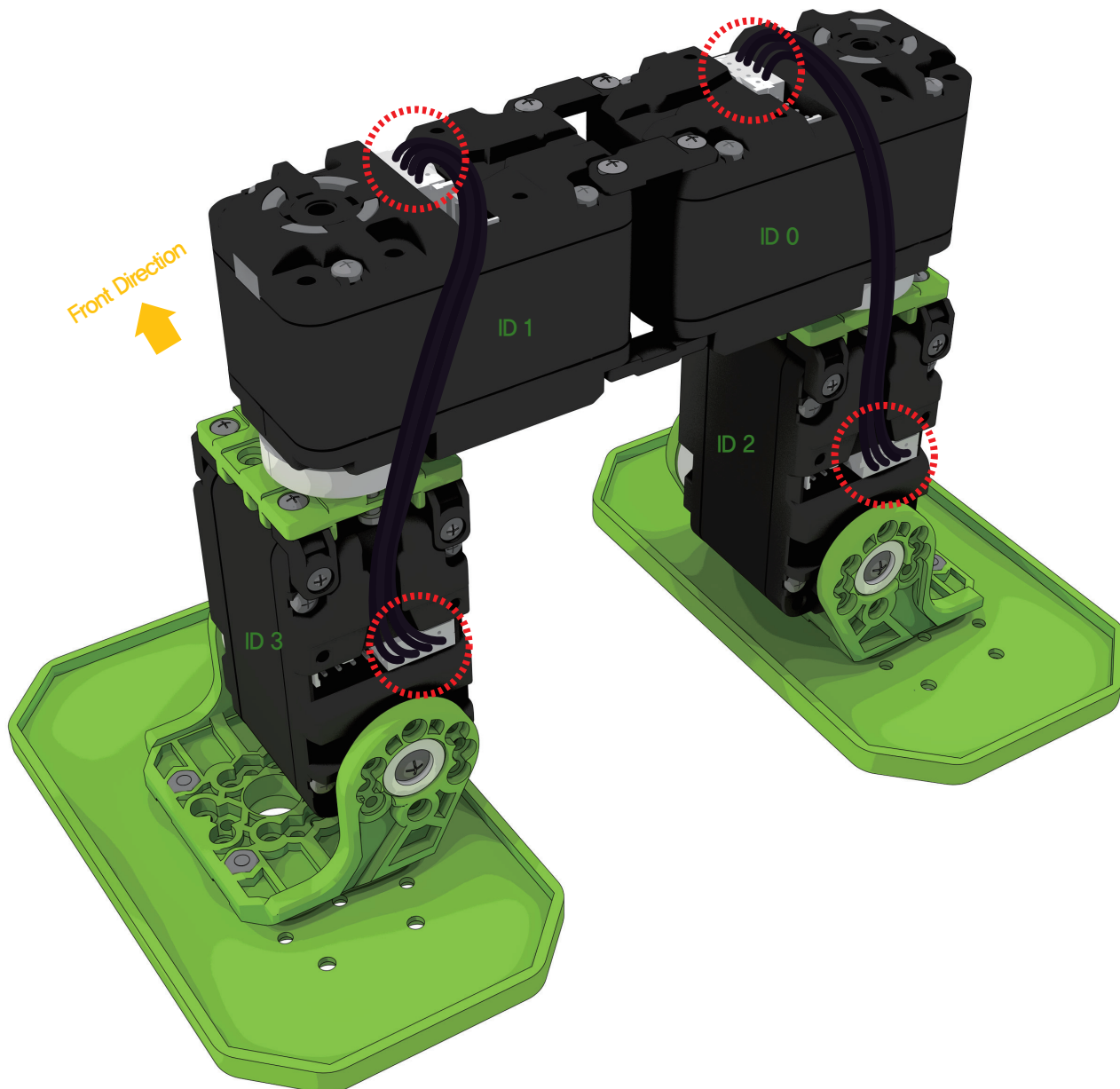
PH/M 3.0X8

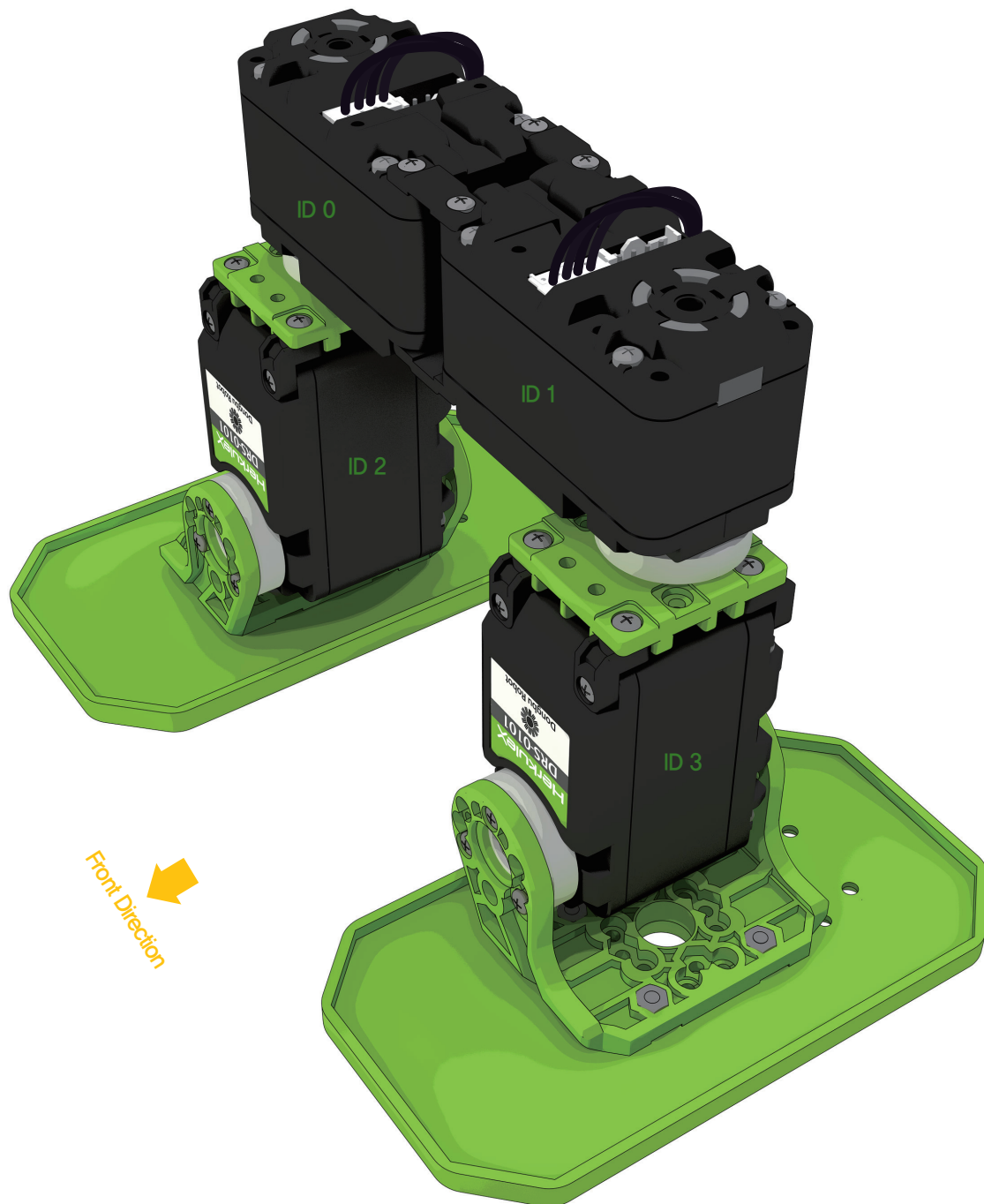


Required Parts



DRA-0003
Harness (100mm) 2ea





Assembly Manual for Application Models of HOVIS Lite 4DOF Walking Robot

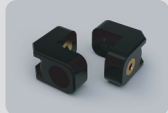
HOVIS Lite



Required Parts

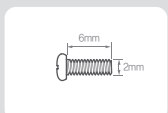


DRA-0058 4ea
Bolt (PH/M 2.0x6)



DRJ-0001 4ea
L-type Joint (Single Nut)

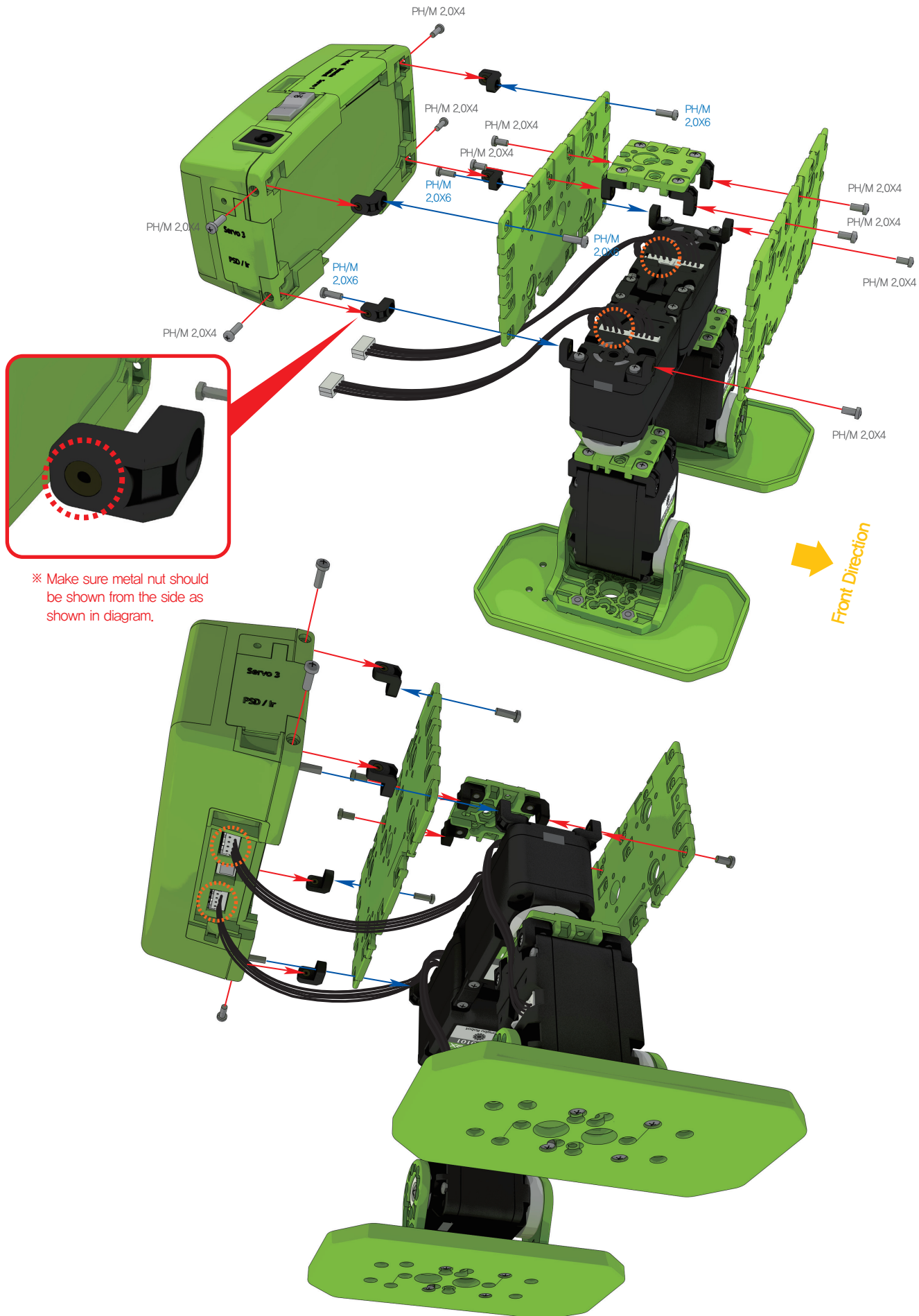
1:1 SCALE



PH/M 2.0x6

Assembly Manual for Application Models of HOVIS Lite 4DOF Walking Robot

HOVIS Lite



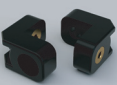
Required Parts



DRA-0056 Bolt (PH/M 2.0X4) **10ea**



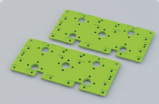
DRA-0058 
Bolt (PH/M 2.0X6)



DRJ-0001
L-type Joint
(Single Nut)



DRA-0003
Harness (100mm)



DRB-0001
Front / Back



DRC-005T
Controller

1:1 SCALE



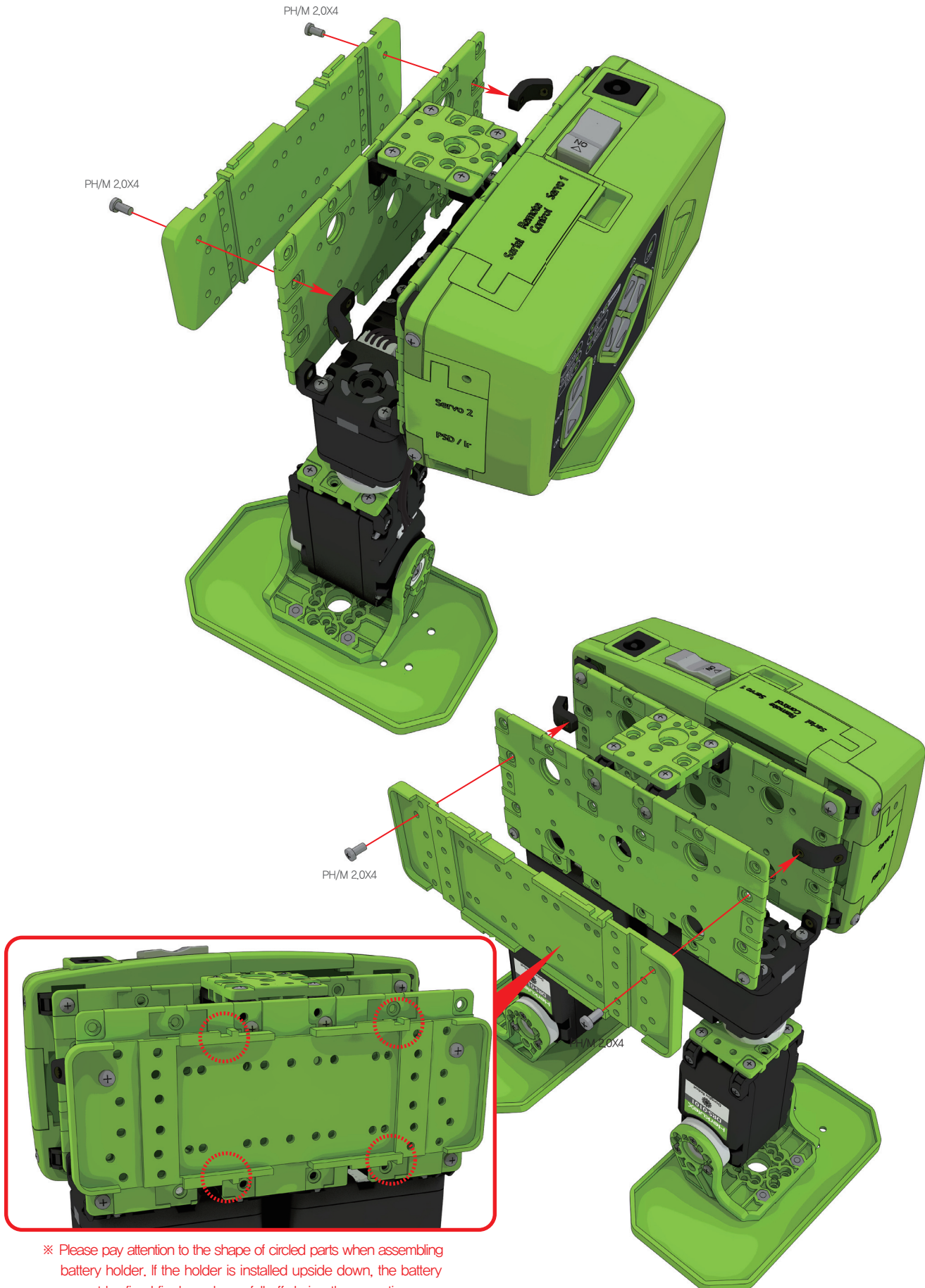
PH/M 2.0X4



PH/M 2.0X6

Assembly Manual for Application Models of HOVIS Lite 4DOF Walking Robot

HOVIS Lite



Required Parts



DRA-0056
Bolt (PH/M 2.0X4)

2ea



DRJ-0009
V-type Joint
(12.0mm, Double N)

2ea



DRB-0007
Battery Holder

1ea

1:1 SCALE



PH/M 2.0X4

※ Please pay attention to the shape of circled parts when assembling battery holder. If the holder is installed upside down, the battery cannot be fixed firmly and may fall off during the operation.

Assembly Manual for Application Models of HOVIS Lite 4DOF Walking Robot

HOVIS Lite

Please make sure the Power On controller is "Off" before connection of battery.

Required Parts



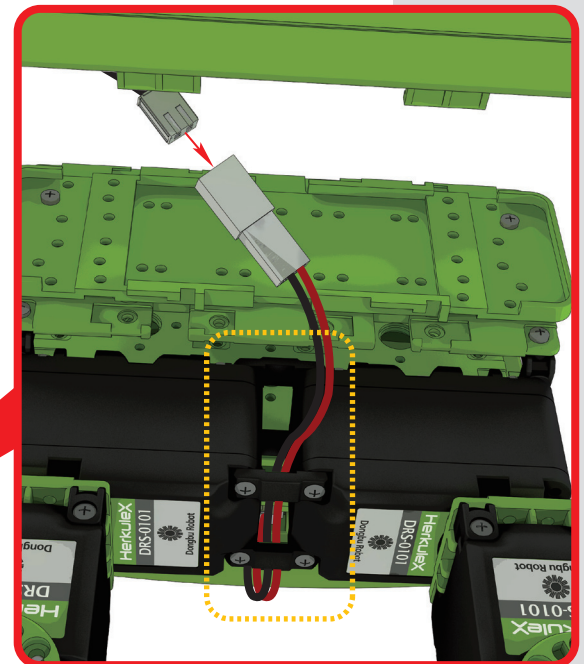
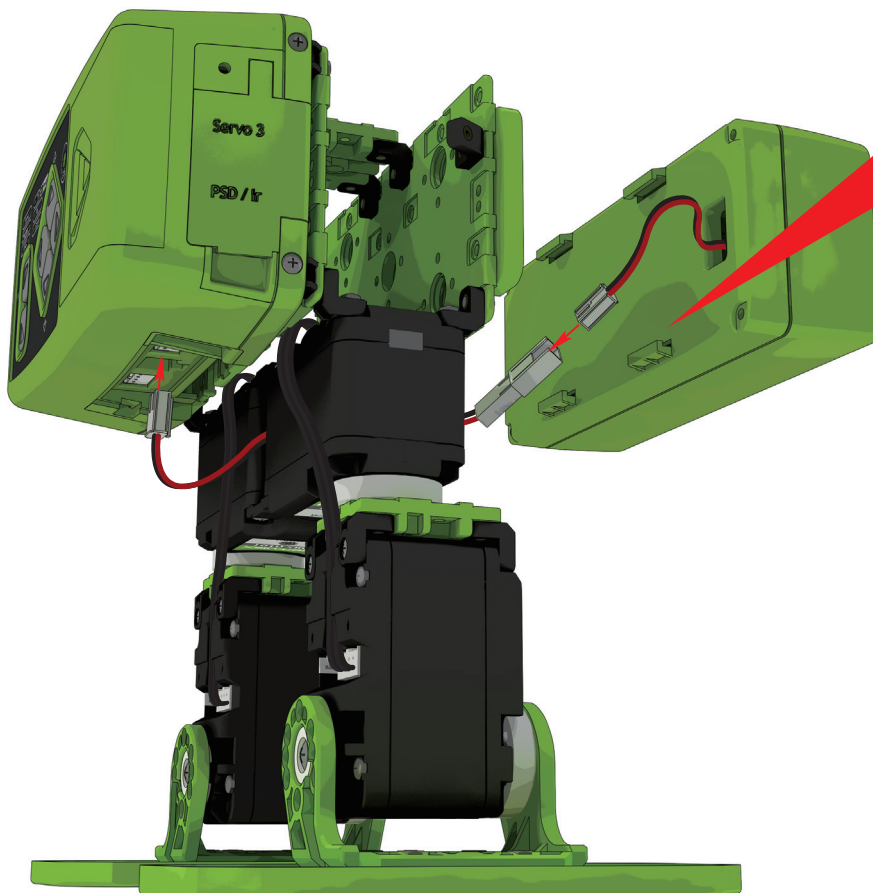
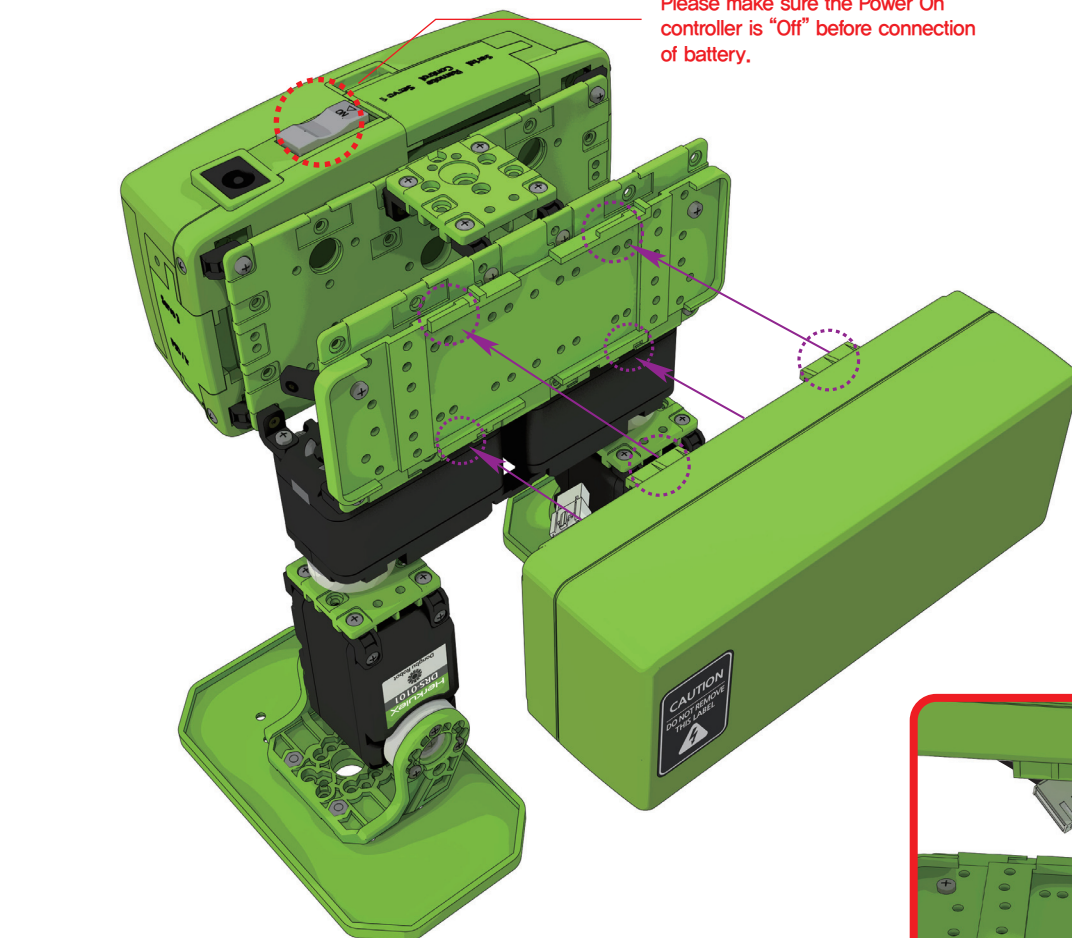
Battery Cable 1ea

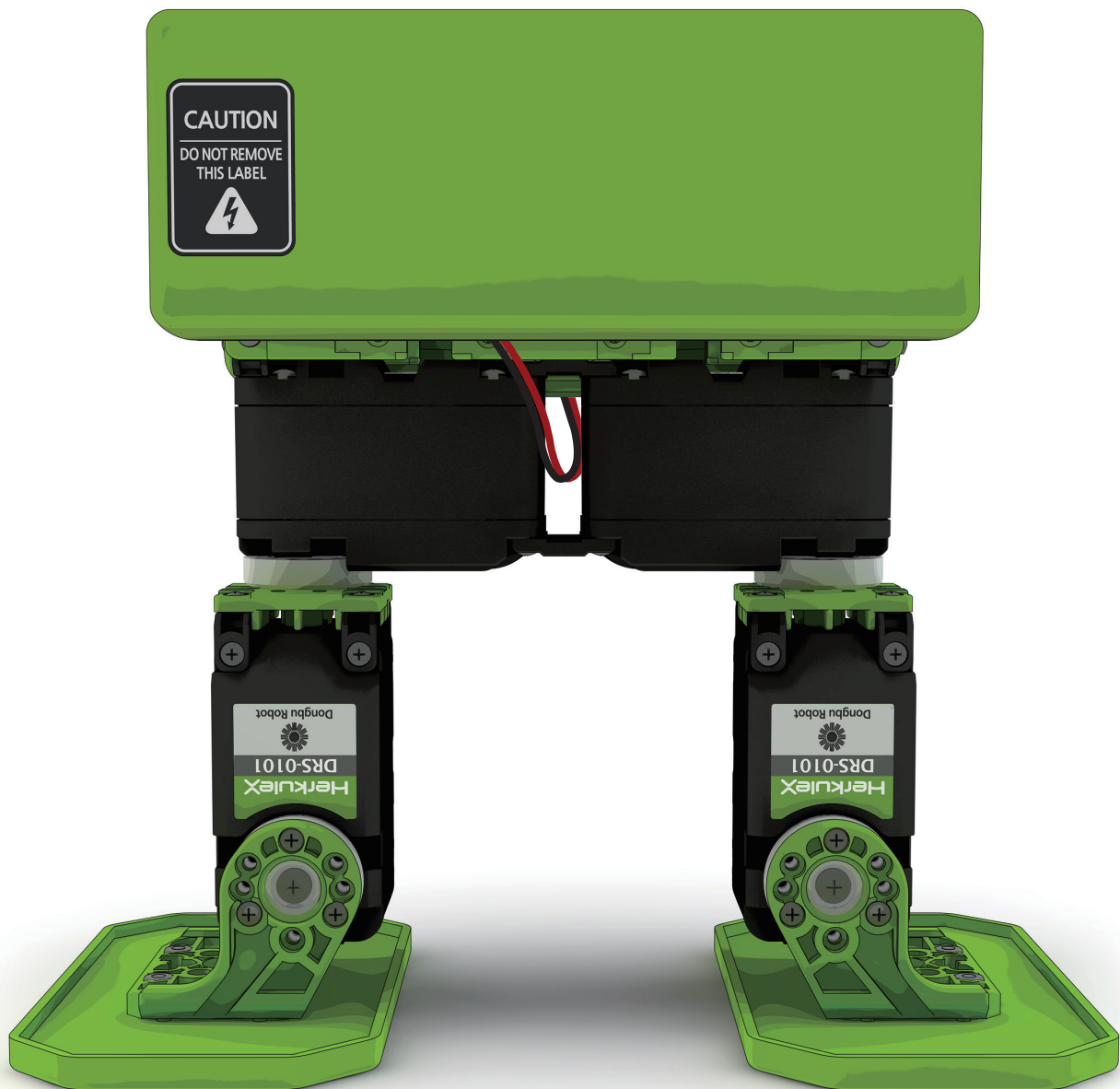


DRB-0007 Battery Case 1ea

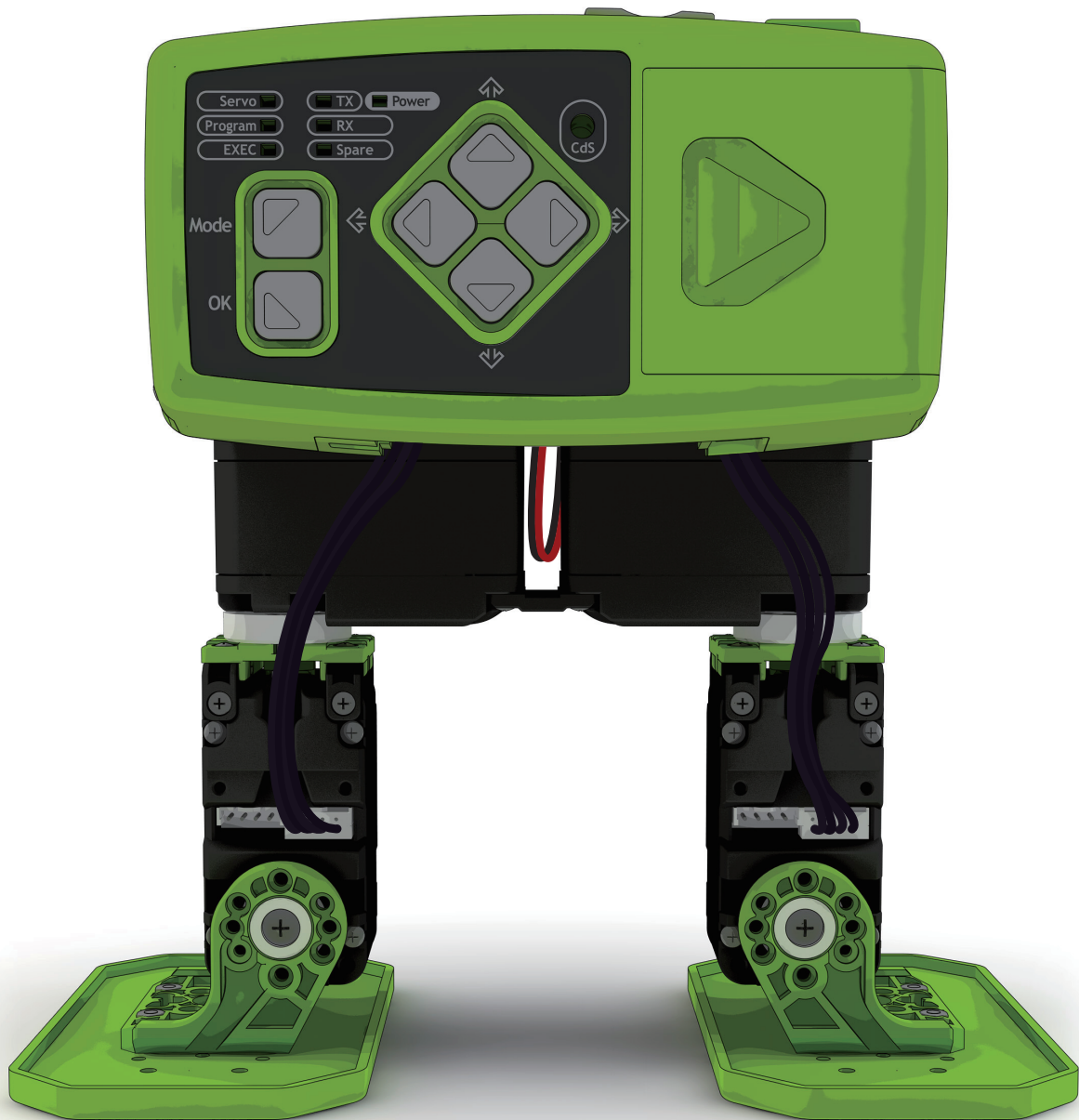


DRL-0728 7.4V Li-Po Battery (3,000mAh) 1ea

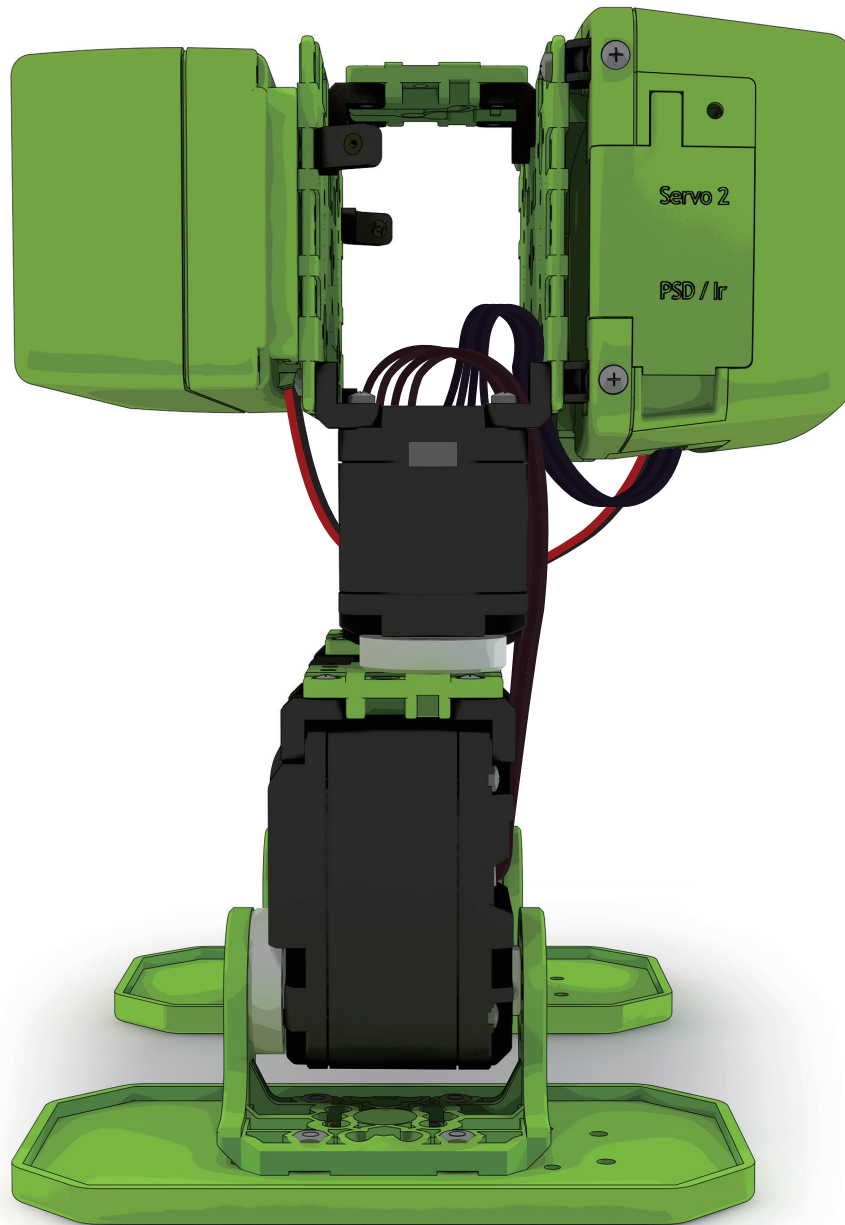




Front View



Back View



Side View